

Absorbing the special discharge pulse of diaphragm pump, could output liquid smoothly.

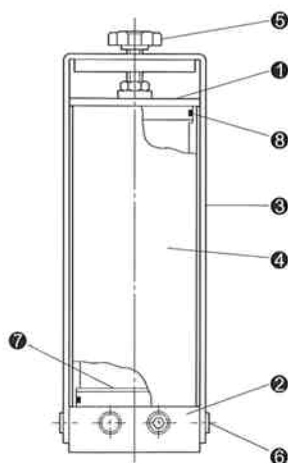
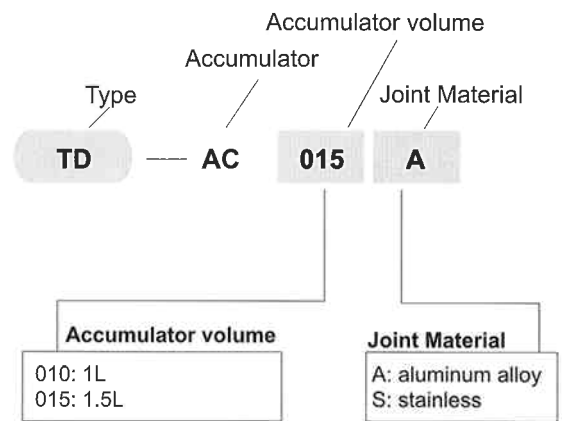
- Disassemble and install simply without any tool.(cleaning effectively)
- Less parts, easily operate and maintain.
- Could produce transparent acrylic tube, so that you can observe the fluid in accumulator.(Usage Press 0.2~0.5MPa)



Diaphragm Pump Special Accumulator

Type	TD-AC010※	TD-AC015※
The appropriate diaphragm Pump type	TD-08 · TD-15	TD-20
Sealed air press	Ari press	
Usage press scope	0.2~0.7MPa	
Press-Resistant	0.8MPa	
Material of pump body	aluminum alloy、stainless	
Joint Caliber	2 ports at side:RC3/8 1 port on the bottom:RC1/2	
Environment Temperature	0~60℃	
Installation Direction	Vertical	
Volume of accumulator	1 · 1.5L	
Weight Kg	aluminum alloy	1L : 2.2 1.5L : 2.8
	stainless	1L : 4.9 1.5L : 6.3

Notes: • When TD-15 needs higher output pressure(high elevation height), we suggest that the volume of accumulator should be 1.5L.



No.	Name	Material	Quantity
①	Cover A	aluminum alloy	1
		stainless	
②	Cover B	aluminum alloy	1
		stainless	
③	Fixed clamp	stainless	1
④	Tube	aluminum alloy	1
		stainless	

No.	Name	Material	Quantity
⑤	Knob	Resin	1
⑥	Stopper Bolt	stainless	2
⑦	Buffer Plate	stainless	1
⑧	O Ring	fluorin rubber	2

Accumulator for exclusive use

Diaphragm Pump Special Accumulator

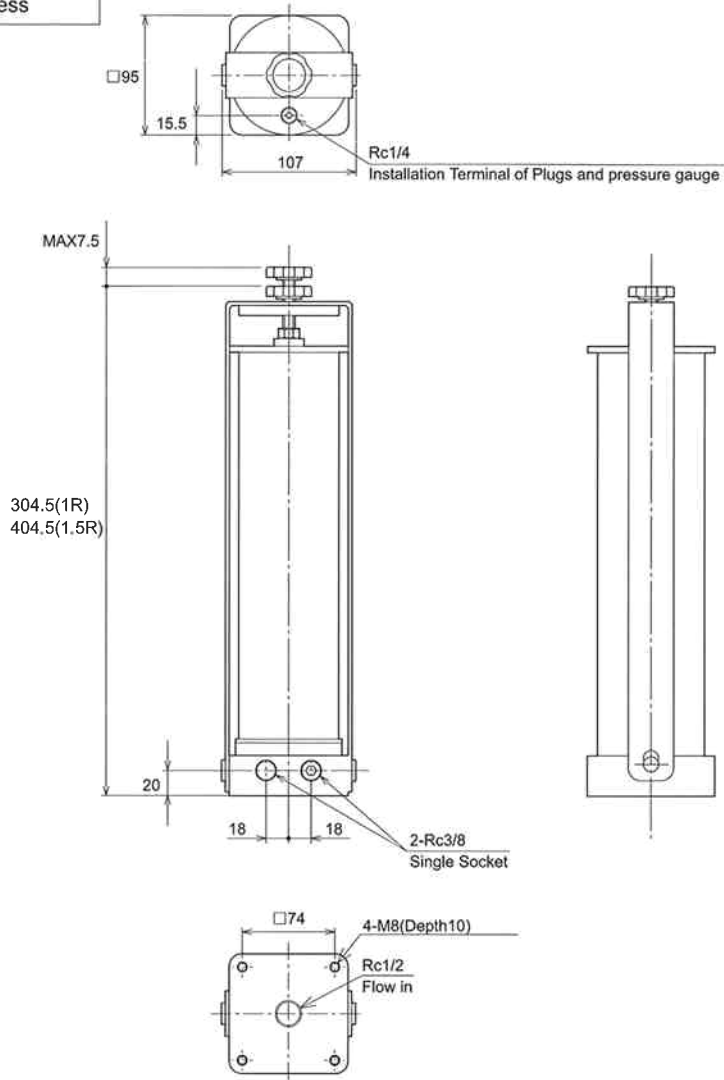
TD-AC

Accumulator volume

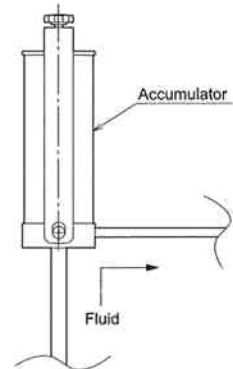
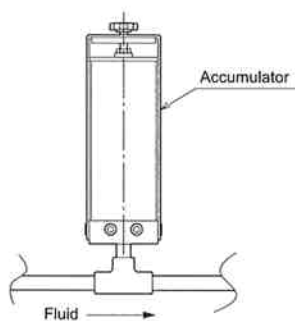
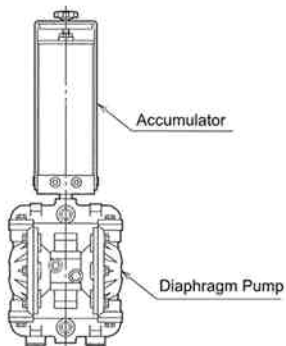
- 010: 1L
- 015: 1.5L

Joint Material

- A: aluminum alloy
- S: stainless



Example for Installation



Notices:

- You should set the accumulator in vertical direction.
- The length of pipe between diaphragm pump and accumulator should be shorten as possible, and the pipe should have larger inter diameter.(In order to reduce pressure loss coming from pipe size)
- After joining the pipe, you should confirm each joint part with no leakage.
- Should lock useless ports with pin.
- If the accumulator is used for a long time, please fill air into.(Less air in the accumulator would decline function of pulse absorbing)
- If output press is small(discharge head is short etc.)

The accumulator doesn't work very well due to pressure shortage. In such a case, we recommend that the throttle valve should be connected to the outlet of the accumulator

Air filling method:

- 1)Change the press into atmospheric pressure in the pipe.
- 2)Drain the fluid from pipe and accumulator.
- 3)Loose the gauge plug, change the press into atmospheric pressure in the pipe.
- 4)Then set the gauge plug, run diaphragm pump, confirm no air leak.