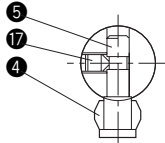
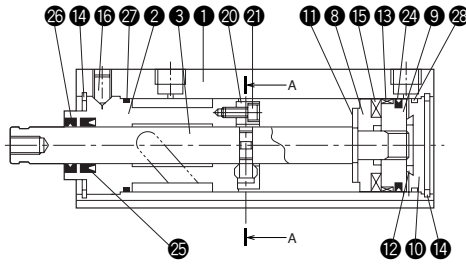


Rotary Clamp Cylinder

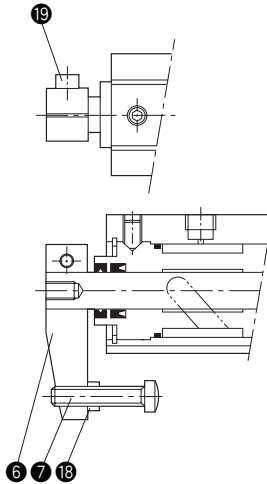


A-A cross-section diagram



SD type

- The drawing shows straight stroke 20mm.
- Extend stroke 10mm is not equipped with 20 spacer and 21 bolt with hexagonal hole.



With arm

Parts List

No.	Parts Name	Material	Qty.
①	Body	Alloyed aluminum	1
②	Bush	Spherical graphite cast iron	1
③	Piston rod	Carbon steel for machine structure	1
④	Roller	Carbon steel for machine structure	1
⑤	Roller pin	Carbon steel for machine structure	1
⑥	Arm	Rolled steel for general structure	1
⑦	Adjustment bolt	Rolled steel for general structure	1
⑧	Spacer for magnet	Copper alloy	1
⑨	Piston	Alloyed aluminum	1
⑩	Bottom plate	Alloyed aluminum	1
⑪	Rod side cushion pad	Urethane rubber	1
⑫	Head side cushion pad	Urethane rubber	1
⑬	Wearing	Synthetic resin	1
⑭	C style set ring for hole	—	2
⑮	Magnet	—	1
⑯	Set screw with hexagonal hole	—	1
⑰	Set screw with hexagonal hole	—	1
⑱	Hexagonal nut	—	1
⑲	Bolt with hexagonal hole	—	1 (2)
⑳	Spacer	Spherical graphite cast	1
㉑	Bolt with hexagonal hole	—	3

• Value in () is for $\phi 50$, $\phi 63$.

Packing List

No.	Parts Name	Material	Qty.	Parts code		
				$\phi 40$	$\phi 50$	$\phi 63$
㉒	Piston packing	Nitride rubber	1	PWP-40N	PWP-50N	PWP-63N
㉓	Rod packing	Nitride rubber	1	PNU-16A	PNU-20	PNU-20
㉔	Dust wiper	Nitride rubber with metal ring	1	K2-16	K2-20	K2-20
㉕	O-ring for bush	Nitride rubber	1	S-36	S-46	S-60
㉖	O-ring for bottom plate	Nitride rubber	1	S-36	S-46	S-60
Packing set	Double-acting side port cylinder	—	1 set	Please consult for details.		

Note) • Code for seals is subject to change.