

Flow Sensor EFS3 Series



- ① Compact type flow sensor
- ② The two-point surveillance of flux change is possible.
- ③ As for EFS3, the flux display is equipped standard.
- ④ Detection in two methods, magnetic/iron proximity type.
- ⑤ The straight introductory line is not necessary.
- ⑥ Flexible installation.
- ⑦ A piping part standardizes a metal adapter.
- ⑧ A small flux type is also standardized.

○Specification

Flow rate specifications	Low flow rate		Standard flow rate	
Part Number	EFS3-M-LR EFS3-M-RL	EFS3-F-LR EFS3-F-RL	EFS3-M	EFS3-F
Detection method	magnetic proximity	iron proximity	magnetic proximity	iron proximity
Body Material	Polyacetal (Glass impregnated)			
Working Fluid	Water			
Port Size	Rc3/8			
Operating Pressure Range	0~1MPa			
Proof Pressure	1.5MPa			
Ambient Temperature	0~+50°C (Free from condensation)			
Fluid Temperature	0~+60°C (Free from freezing)			
Flow Rate Range	0.5~3L/m		2.5~25L/m	
Read Accuracy	±5%FS			
Repeatability	±2%FS			
Alarm signal response time	500ms以下			
Installation direction	One direction		Both Direction	
Weight	320g		300g	

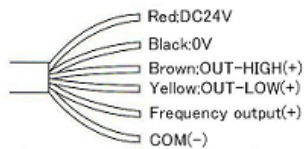
○Power supply Specification

	Power supply Specification
Power supply voltage	DC24V ± 10%
Power consumption	1.0W or less

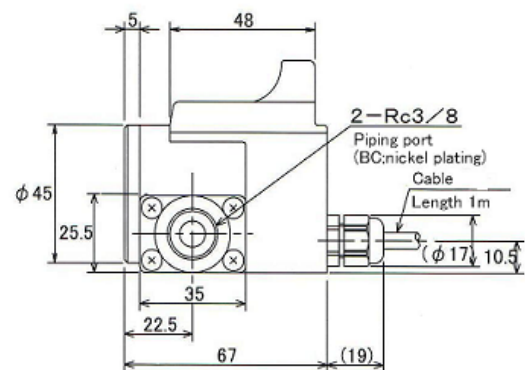
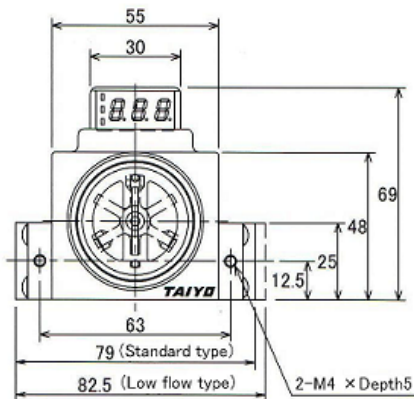
○Output specification

Frequency output	Photocoupler Load current 4mA or less	
Alarm signal output	Photocoupler Max.allowable power DC30V Load current 10mA or less	
Alarm contact	LED Green	If flux exceeds rather than a maximum setting value, LED will light up. At this time A maximum point of contact (The color of a cable:brown) turns on.
	LED Yellow	LED is turned on at the time below a maximum setting value and of below a minimum setting value. At this time, all alarm signals are OFF.
	LED Red	If flux exceeds rather than a minimum setting value, LED will light up. At this time A maximum point of contact (The color of a cable:Yellow) turns on.

Cable
EFS3-※



CIC 6wires 0.18mm² 1m



Dimension