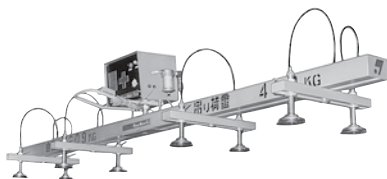


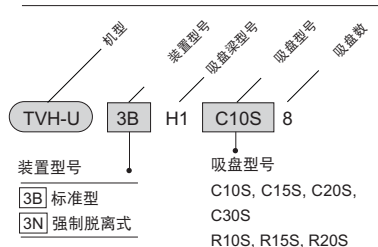
8吸盘H形真空提升机适用于大型易弯曲物体以及易损坏物体，例如大型钢板、大型玻璃板、大型树脂板等的组装、搬送作业。



规格

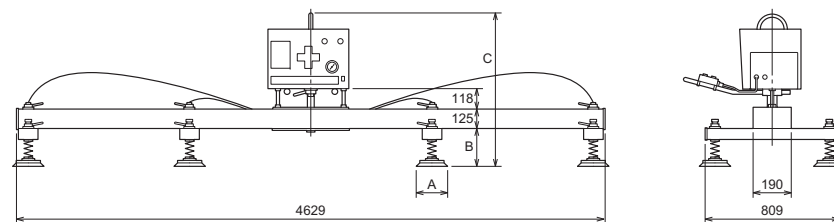
型号	项目	起吊负荷 kN	重量 kg	电动机 kW	电压
TVH-U3BH1C10S8		1.18	203	0.2	AC200V (50/60Hz)
TVH-U3BH1C15S8		3.92	213		
TVH-U3BH1C20S8		4.90	215		
TVH-U3BH1C30S8		14.1	245		
TVH-U3BH1R10S8		1.96	203		
TVH-U3BH1R15S8		5.49	211		
TVH-U3BH1R20S8		7.85	219	0.4	AC200V (50/60Hz)
TVH-U3NH1C10S8		1.37	228		
TVH-U3NH1C15S8		4.71	238		
TVH-U3NH1C20S8		5.49	248		
TVH-U3NH1C30S8		16.5	270		
TVH-U3NH1R10S8		2.16	228		
TVH-U3NH1R15S8		6.28	236	9.02	244
TVH-U3NH1R20S8					

型号记号



单位: mm

TVH-U



尺寸表

型号	记号	A	B	C
TVH-U3※H1C10S8		φ100	231	952(956)
TVH-U3※H1C15S8		φ165	234	955(959)
TVH-U3※H1C20S8		φ200	234	955(959)
TVH-U3※H1C30S8		φ300	238	959(963)
TVH-U3※H1R10S8		φ154	239	942(946)
TVH-U3※H1R15S8		φ220	239	942(946)
TVH-U3※H1R20S8		φ254	239	942(946)

• () 内为强制脱离式的尺寸。